

Local Area Network(LAN)

- **It is a network operate within limited geographical location with permanent connectivity and high bandwidth.**
- **Office, Shopping Mall, School, College, University campus.**

Metropolitan Area Network (MAN)

- **It is a network spans within a city. It provides part time or full time connectivity.**

Wide Area Network(WAN)

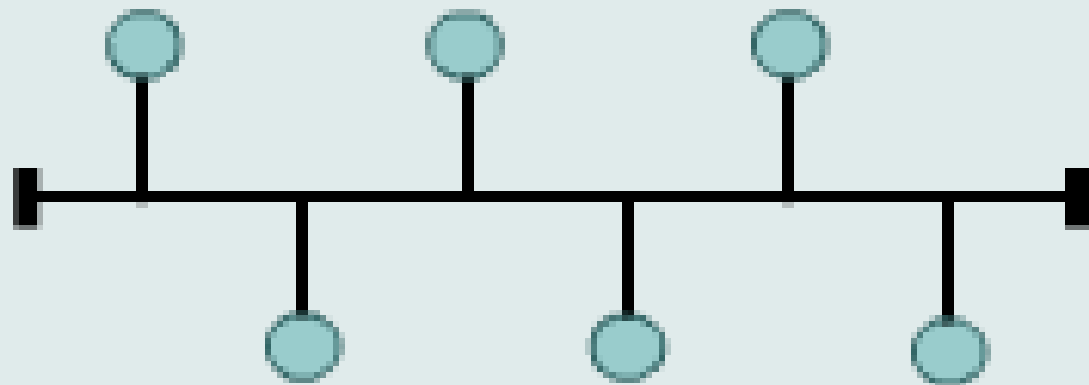
- This network operates on large area network.
- It provides part time andfulltime connectivity.
- City-city,state-state,country-country ,continent-continent.
- Internet is the best example of WAN.

Topologies

Bus or Serial topology

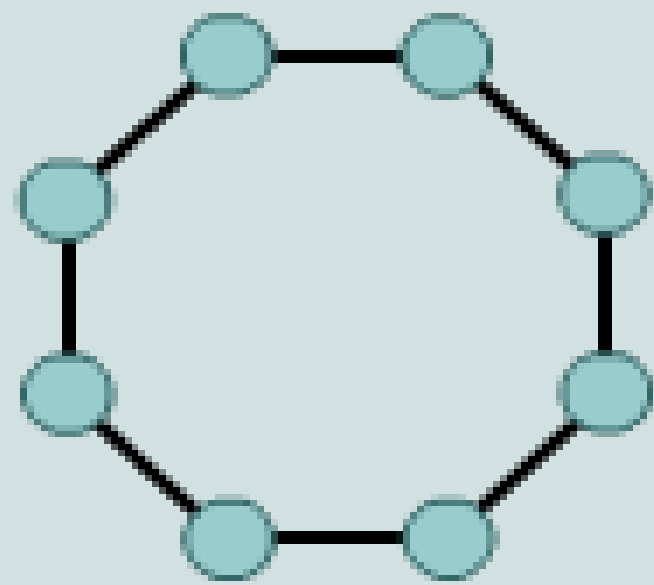
- Connections through co-axial cable, T-Connectors, NIC cards with bnc connectors.
- If Connections(link) between any two computer fails whole network is not accessible.

Bus
Topology



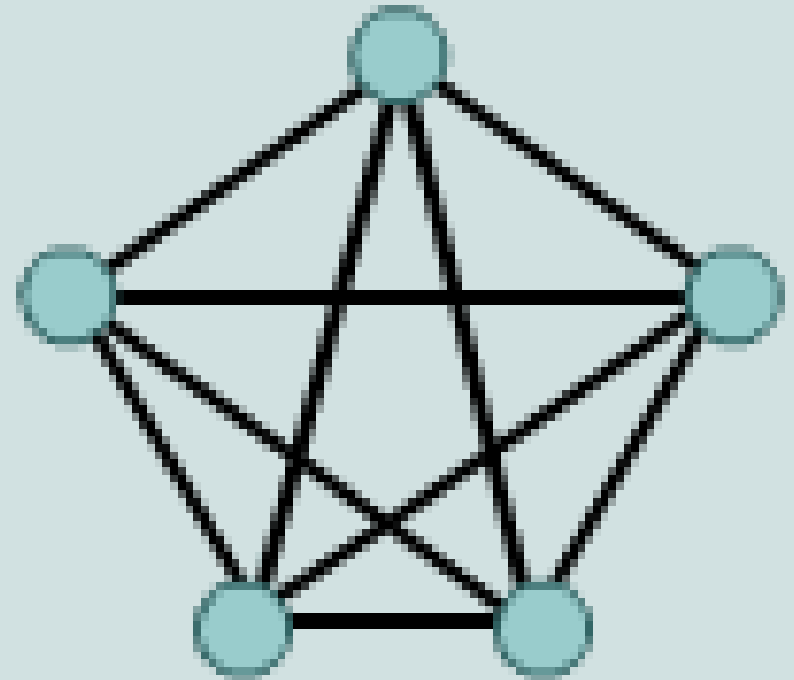
Ring Topology

Ring Topology



Mesh Topology

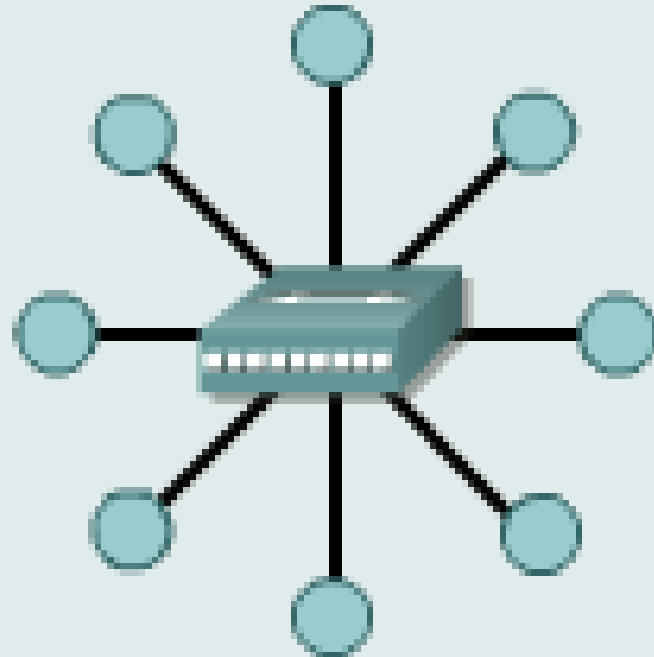
Mesh Topology



Star Topology

❑ A star topology connects all cables to a central point of concentration.

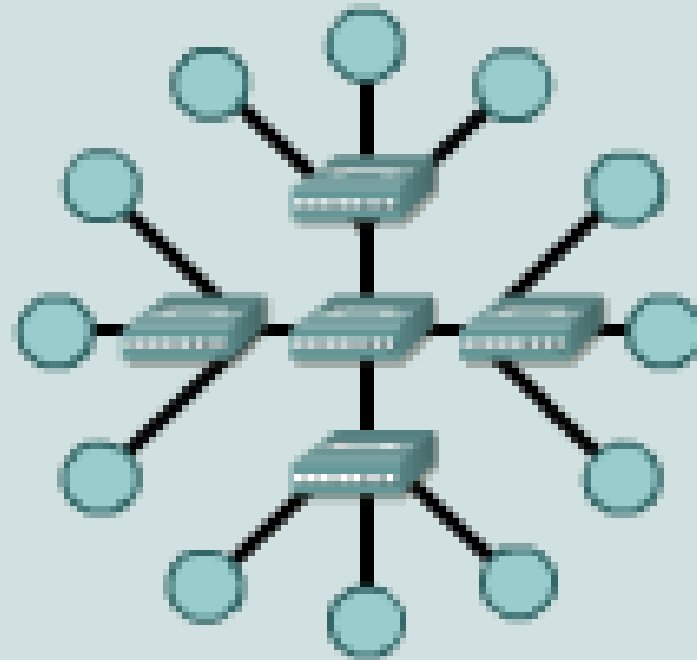
Star Topology



Extended Star Topology

❑ An extended star topology links individual stars together by connecting the hubs and/or switches. This topology can extend the scope and coverage of the network.

Extended Star
Topology



Thank You