

Server History

Sr.No.	Operating System	Year
1	Win NT 3.1	1993
2	Win NT 3.4	1994
3	Win NT 4.0	1995
4	Win NT 5.0 (2000 Server)	2000
5	2003 Server	2003
6	2008 R1 Server	2008
7	2008 R2 Server	2009
8	2012 Server (R1 and R2)	2012

Installation Types

- 1) Bootable DVD**
- 2) Bootable Pen-drive**
- 3) Windows Deployment Service**

PhoenixBIOS Setup Utility							
Main	Advanced	Security	Boot	Exit			
System Time: [13:43:59] System Date: [09/18/2015] Legacy Diskette A: [1.44/1.25 MB 3½"] Legacy Diskette B: [Disabled] ▶ Primary Master [None] ▶ Primary Slave [None] ▶ Secondary Master [VMware Virtual ID] ▶ Secondary Slave [None] ▶ Keyboard Features System Memory: 640 KB Extended Memory: 1956864 KB Boot-time Diagnostic Screen: [Disabled]				Item Specific Help <Tab>, <Shift-Tab>, or <Enter> selects field.			
F1	Help	↑↓	Select Item	-/+	Change Values	F9	Setup Defaults
Esc	Exit	↔	Select Menu	Enter	Select ▶ Sub-Menu	F10	Save and Exit

PhoenixBIOS Setup Utility

Main

Advanced

Security

Boot

Exit

CD-ROM Drive

+Removable Devices

+Hard Drive

Network boot from Intel E1000e

Item Specific Help

Keys used to view or configure devices:
<Enter> expands or collapses devices with a + or -
<Ctrl+Enter> expands all
<+> and <-> moves the device up or down.
<n> May move removable device between Hard Disk or Removable Disk
<d> Remove a device that is not installed.

F1	Help	↑↓	Select Item	-/+	Change Values	F9	Setup Defaults
Esc	Exit	↔	Select Menu	Enter	Select ► Sub-Menu	F10	Save and Exit

Press any key to boot from CD or DVD..._

Windows Setup



Language to install: English (United States)

Time and currency format: English (United States)

Keyboard or input method: US

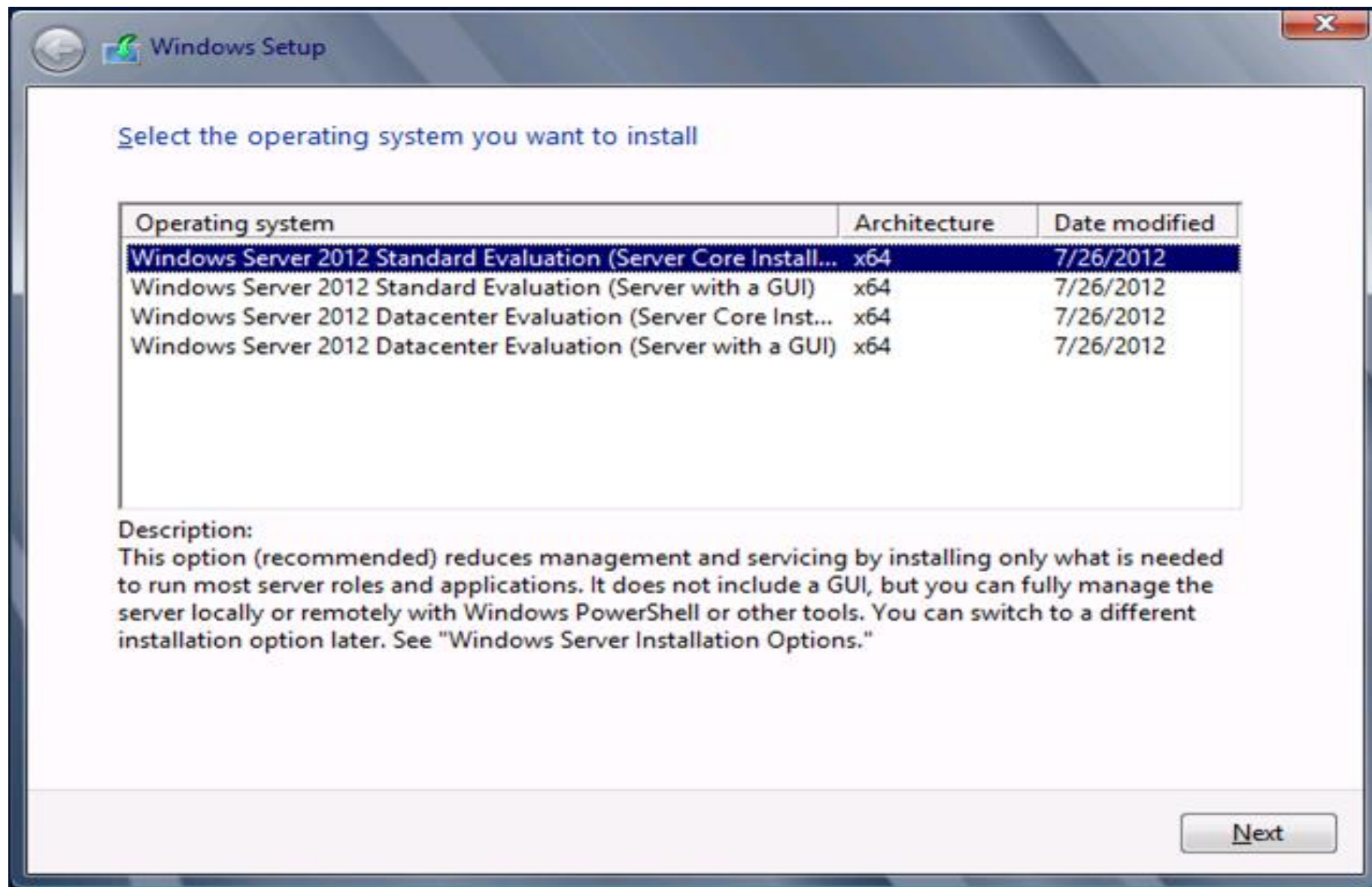
Enter your language and other preferences and click "Next" to continue.

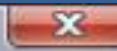
Windows Setup

 Windows Server 2012

[Install now](#)

[Repair your computer](#)





License terms

MICROSOFT SOFTWARE LICENSE TERMS

MICROSOFT WINDOWS SERVER 2012 STANDARD

These license terms are an agreement between Microsoft Corporation (or based on where you live, one of its affiliates) and you. Please read them. They apply to the software named above, which includes the media on which you received it, if any. The terms also apply to any Microsoft

- updates,
- supplements,
- Internet-based services, and
- support services

a accept the license terms

Next



Which type of installation do you want?

Upgrade: Install Windows and keep files, settings, and applications


The files, settings, and applications are moved to Windows with this option. This option is only available when a supported version of Windows is already running on the computer.

Custom: Install Windows only (advanced)

The files, settings, and applications aren't moved to Windows with this option. If you want to make changes to partitions and drives, start the computer using the installation disc. We recommend backing up your files before you continue.

[Help me decide](#)

Where do you want to install Windows?

	Name	Total size	Free space	Type
	Drive 0 Unallocated Space	127.0 GB	127.0 GB	

 Refresh

Drive options (advanced)

 Load driver

Next

Settings

Type a password for the built-in administrator account that you can use to sign in to this computer.

User name

Password

Reenter password



Finish

Overview of Post-Installation Configuration

PROPERTIES

For LON-SVR1

Computer name LON-SVR1

Domain Adatum.com

Windows Firewall Public: On

Remote management Enabled

Remote Desktop Disabled

Network adapter teaming Disabled

Local Area Connection 172.16.0.20, IPv6 enabled

Last installed updates Never

Windows Update Never check for

Last checked for updates Never

Windows Error Reporting Off

Customer Experience Improvement Program Participating

IE Enhanced Security Configuration On

Time zone (UTC-08:00) Pac




Product ID Not activated

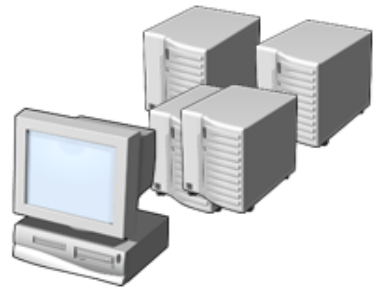
Operating system version Microsoft Windows NT 6.2.8250.0 Processors Intel(R) Core(TM)

Hardware information Microsoft Corporation Virtual Machine Installed memory (RAM) 2 GB

What Is Server Manager?

You can use Server Manager to:

- Manage multiple servers on a network from one console
- Add roles and features 
- Launch Windows PowerShell sessions
- View events 
- Perform server configuration tasks 



Administrative Tools and Remote Server Administration Tools

Administrative tools:

- Active Directory Administrative Center
- Active Directory Users and Computers
- DNS console
- Event Viewer
- Group Policy Management Console
- IIS Manager
- Performance Monitor
- Resource Monitor
- Task Scheduler

Thank You